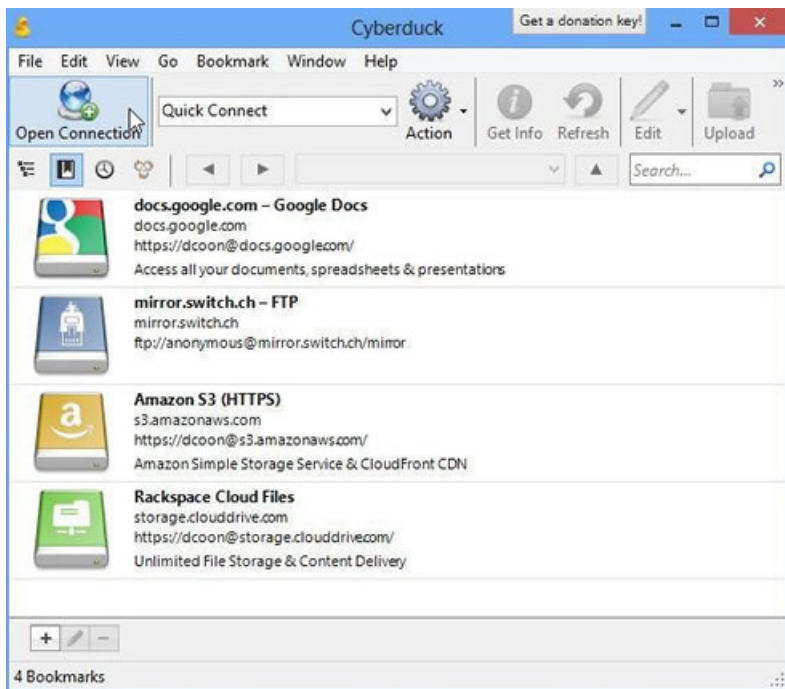


Connecting to the Cal Lutheran FTP Server

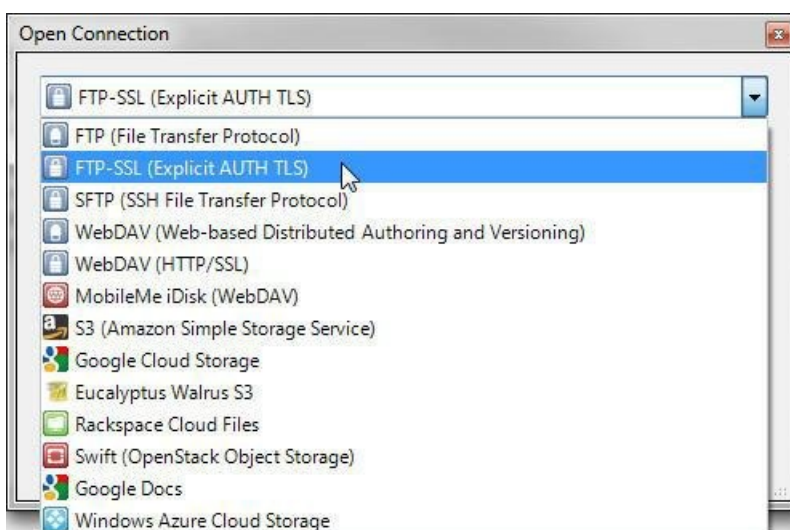
Last Modified on 10/21/2022 2:17 pm PDT

Using Cyberduck for OSX and Windows

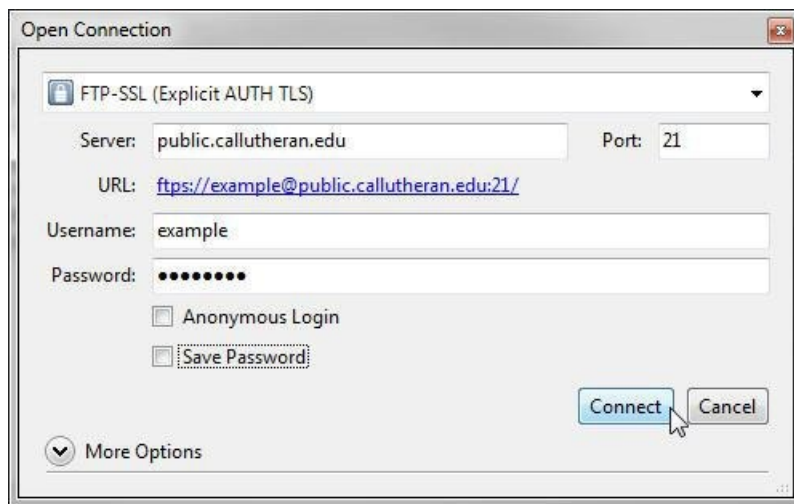
1. Install Cyberduck using the default installation options. [Click here for free download](#). For Windows download the .exe file. Mac users download the zip file and run it after downloading it
2. Launch the program and click Open Connection.



3. Select FTP-SSL (Explicit AUTH TLS) from the drop down menu.



4. Enter the name of the server (public.callutheran.edu), your username and password in the spaces provided.



5. Click Connect. Your FTP folder will display.
6. Selecting Upload will open a window to choose what file for files to upload from your computer to the server.
7. To disconnect from the server, click the eject button labeled Disconnect located in the upper right hand corner.

Note: Although Cyberduck is used in the his documentation, most programs that support FTP-SSL via TLS will work the same settings.