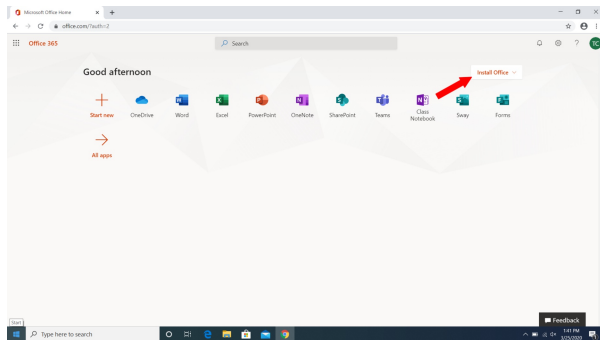


Installing Office 365 on your Home Computer - PC

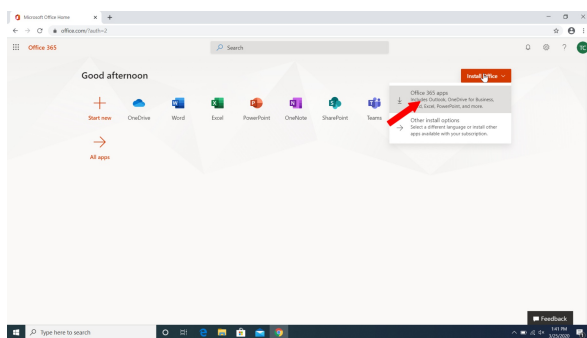
Last Modified on 10/21/2022 3:05 pm PDT

Office 365 is available to enrolled students as well as employees of Cal Lutheran

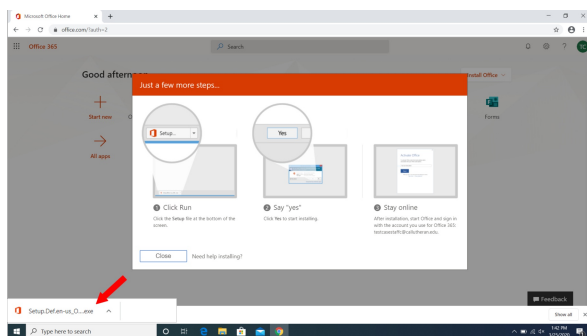
Visit <https://portal.office.com> and sign in with your MyCLU email address



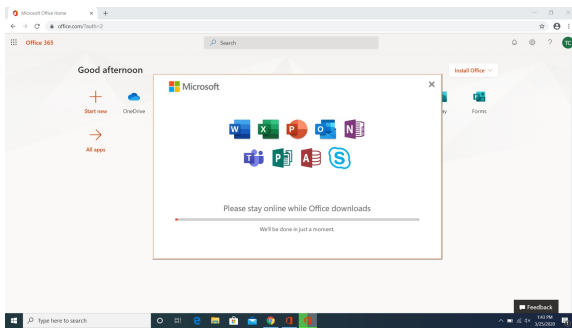
Click on Install Office



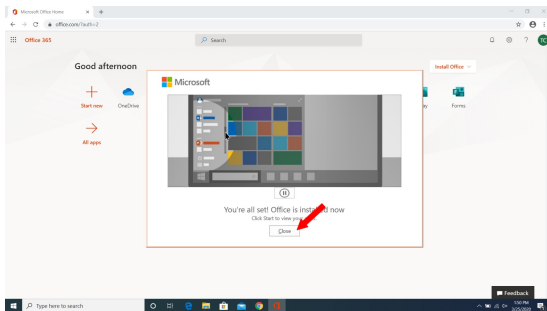
Select Office 365 apps



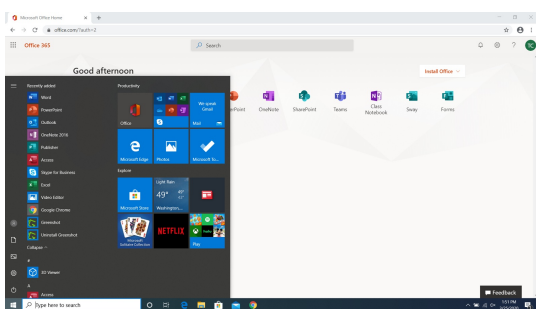
Click on the executable file that is downloaded



Allow the application to install



Close the install window



Your Office applications can be found from the start menu. You can drag the individual items to your task bar.